

ELLE

CANADA

GUIDE
Living
with Art

DECORATION

TERRACE, BALCONY & GARDEN

PRO TIPS
FOR THE PERFECT
OUTDOOR SPACE



EXCLUSIVE
AT HOME
WITH ACTRESS
MARIPIER MORIN

PICTURE PERFECT



When a couple with a passion for contemporary art acquires a historic home in Vancouver, two worlds collide in the most poetic way possible. The result is a world in balance, conceived by designer Jocelyn Ross, founder of **JOCELYN ROSS STUDIOWORKS**.

By Elisabeth Massicoli – Adapted by Zarya Rubin – Photography by Janis Nicolay



HOMES

On the previous spread — Custom curtains (wilsonroad.ca). Minomushi floor lamp by Miyake Design Studio (artemide.com). Camaleonda sofas by Mario Bellini for B&B Italia (inform.ca). Coffee table (brentcomber.com). Candle holders (lisaturnerstudio.com). Custom petrified wood side tables and stools by Rodney Ross (rossdesign.us). Luna Light rug (salari.com). Artwork, Blue Notes series (carriemaeweems.net). Photograph (robertpolidori.com).

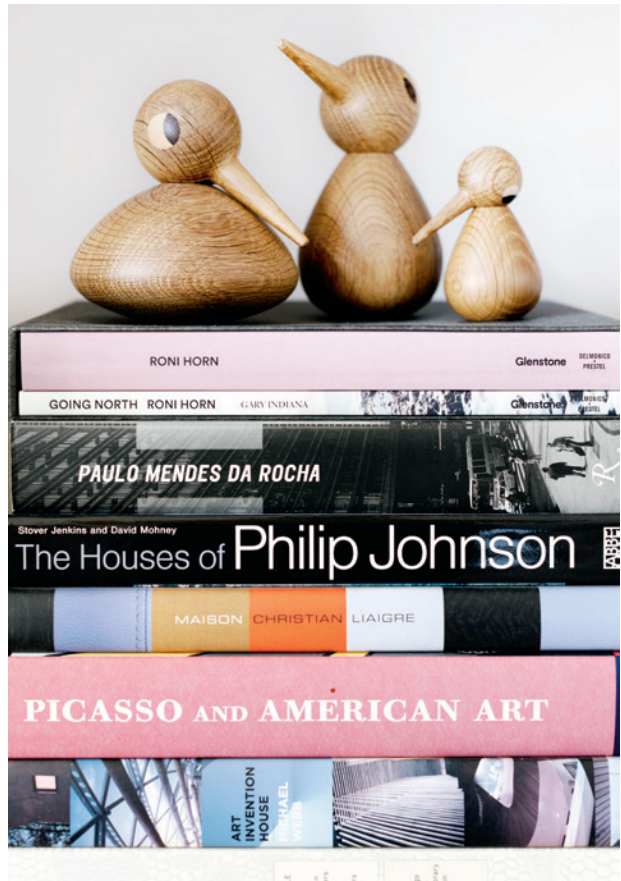
1— Vintage mirror. Coffee table (brentcomber.com). Candle holders (lisaturnerstudio.com). Custom petrified wood side tables by Rodney Ross (rossdesign.us).

2— Bird sculptures by Kristian Vedel (architectmade.com).

1



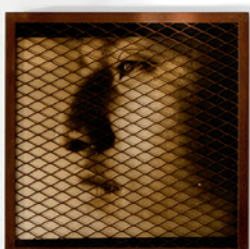
2



In one of Vancouver's most storied enclaves, at the heart of the historic Shaughnessy neighbourhood, lies the Crescent—a discreet pocket framed by century-old trees and meticulously manicured gardens. This quiet and sought-after location is home to sprawling heritage properties that hark back to another era. Among them stands a majestic 1909 Craftsman mansion, recently subdivided into three high-end residences of approximately 4,000 square feet each, making it the new kid on the block. One of these homes was entirely reimaged by Jocelyn Ross, who dubbed it The Canvas House in reference to the many paintings and sculptures it holds. "From the architecture to the window treatments to the furniture, everything was conceived as a jewellery box for the art," explains Ross. "The deliberately low-profile furniture allows the works to take centre stage and breathe."

The homeowners, Tara and Chris—American expats united by a shared passion for design, fashion and modern art—were immediately drawn to this character-laden residence steeped in history. Spread across three levels, the home features generous, light-filled living spaces on the main floor, suitable for parties both large and small. Upstairs, the primary suite sits alongside a home office that does double duty as a guest bedroom. The lower level is dedicated to the couple's two adult sons, who visit often. As a whole, the layout creates an ideal setting for a couple that truly embraces the art of entertaining. →

Vintage chair by Robert Ledingham. Vase (torretagus.com).
Photographs (gonzalezpalma.com).



“Bringing in local artists to every project is a passion of mine—their work often becomes the starting point that inspires and shapes the entire space.”

— Jocelyn Ross





“The goal was to tell a story where heritage and contemporary living could coexist in harmony.”

– Jocelyn Ross



1

Opposite page – Custom bronze range hood (gemlevy.com). Mila wall sconces (matthewmccormick.ca). Faucet (thegalley.com). Cristallo quartzite countertop (haristoneslimited.com).

1– The dining room appears at the end of the corridor. 28 Series blown-glass pendant light (bocci.com). Custom dining table by Rodney Ross (rossdesign.us). Saarinen Executive chairs by Eero Saarinen (knoll.com).

2– Custom stools (sethchristou.com). 48" dual fuel range (ca.subzero-wolf.com).

2







1

2

Opposite page – 28 Series blown-glass pendant light (bocci.com). Custom dining table by Rodney Ross (rossdesign.us). Saarinen Executive chairs by Eero Saarinen (knoll.com). Photograph by Adam Fuss (fraenkelgallery.com).

1– Endless sofa, Lo Turn swivel chairs, Ile ottomans and Around side table (bensen.com). Arco floor lamp (flos.com). Floyd-Hi coffee table by Piero Lissoni (livingdivani.it). Cushions (designersguild.com). Timo rug (bebitalia.com). Wooden sculpture.

2– Airisto bench by Joanna Laajisto (madebychoice.com).



1— Husk bed by Patricia Urquiola (bebitalia.com). Custom bedside table designed by Jocelyn Ross Studioworks. Vintage table lamps. Mirage BB560 rug (salari.com). Suitcase armchairs by Rodolfo Dordoni (minotti.com). *Structure of Thought #13*, artwork by Doug Starn and Mike Starn (dmstarn.com).

2— Flock of Light 11 pendant light by Studio Toer (moooi.com). Picasso freestanding bathtub (hydrosystem.com). Nostromo faucet (fantini.it). Eames chair by Herman Miller (eq3.com). Custom stool by Rodney Ross (rossdesign.us). Mews porcelain flooring by Barber & Osgerby (mutina.it).

3— Eden modular sofa (rodaonline.com). Custom ottomans (wilsonroad.ca). Tulip table by Eero Saarinen (knoll.com). Vintage chairs.

“My priority was to create a sense of flow and lightness, with clearly defined zones for living, hosting and relaxing,” says Ross. “The layout allows Tara and Chris to have enough space to welcome guests, while still preserving a warm, intimate feel when it’s just the two of them.”

With its 10-foot ceilings and expansive windows, the main living area beautifully showcases the couple’s growing contemporary art collection, curated with an intuitive, emotion-driven approach. Complementing the collection are works by Vancouver-based and regional artists, acquired with the purpose of engaging in a dialogue with the home’s storied history. Very quickly, recalls Ross, art became the anchor of the entire project—giving rise to the home’s nickname.

“It was essential, for both the homeowners and myself, to root this house in the creative community of their new home,” she explains. “My goal was to allow heritage architecture, contemporary art and modern living to coexist with calm, coherence and harmony.”

“We shared a common vision,” she adds. “After removing the heavy renovations done in the 1980s—back when the house was converted into condos—it was about refining the proportions, focusing on the flow and details to restore a sense of clarity and cohesion, all while remaining faithful to the home’s heritage elements.”

1



The original woodwork and mouldings, along with the grand living-room fireplace dating back to 1909, were preserved and, like the walls, repainted in a soft neutral—"Chantilly Lace" by Benjamin Moore. The aim, Ross explains, was to create a quiet backdrop that would allow both the artwork and contemporary furnishings to truly shine. She has a particular fondness for spaces that strike a balance between nostalgia and newness.

In this residence, art writ large—paintings, sculptures, furniture and functional objects alike—shapes the home's identity. The project honours the history of the house, tying it to the personal story of its occupants, and gives art a starring role going forward. The result is a space where past and present come together in perfect harmony. —
(jrstudioworks.com)



2

3

